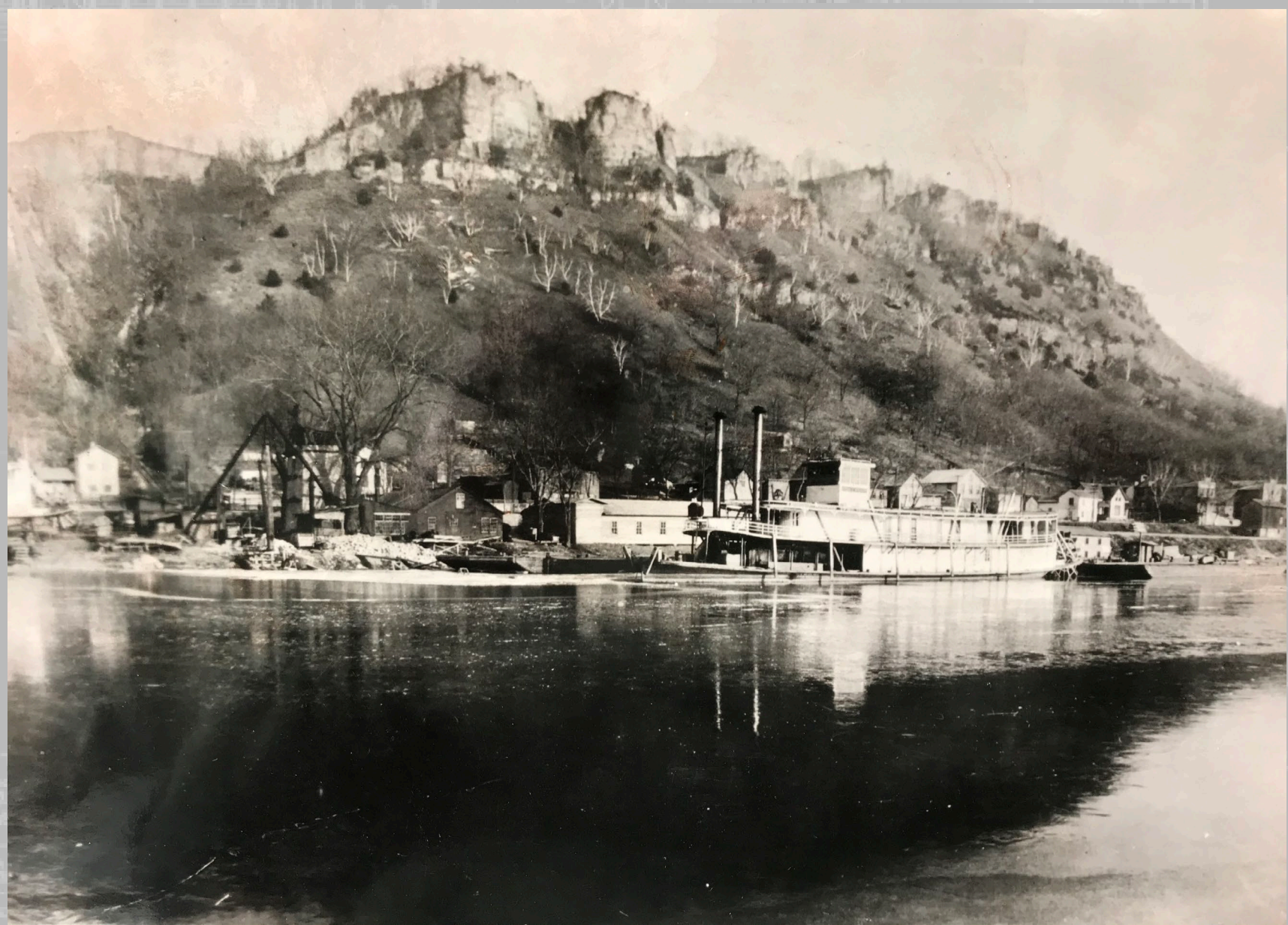


SAINT PAUL DISTRICT – MISSISSIPPI RIVER PROJECT OFFICE

PHYSICAL SUPPORT BRANCH

YEAR IN REVIEW



US Army Corps
of Engineers®



BUILDING STRONG®
and Taking Care of People!



Fountain City Service Base/ Mississippi River Project Office



Year In Review

- Support for M&R and Dredge Goetz Projects
- St. Paul DLA Excess Sight

Additions to Service Base

- New Overhead Hoist in Welding Building
- Replaced Oil Furnaces with LP Furnaces in Office building
- Awarded contract to Replace Mooring Dolphins and Install Sheet Pile Wall Along Shoreline

Future Plans

- Repurpose Paint Building
- Additional Garage Door on GSA Vehicle Building
- Replace Building 9
- 3 Additional Shore Power Connections
- Service Base Master Plan



BUILDING STRONG[®]
and Taking Care of People!



Dredge Goetz & Accompanying Floating Plant



Year In Review (FY21)

- Completed 178 Days of Dredging
- Removed 910,000 Cu/Yds of Material
- Cost Per Cubic Yard \$10.96

Additions to Dredge Fleet

- Replaced VDF Drives on the Dredge Goetz
- Tender Fluekiger Replacement Main Engines
- New Cutterhead Replacement
- 35-ton hydraulic / telescopic crane
- Rebuilding Primary Diesel Generator Engines on the Dredge Goetz
- Replacing PLC Drives on the Dredge Goetz

Future Improvements

- New Land Booster to Accomplish Long Distance Pipelines (Reads Landing)
- Construction of a New Floating Belly Anchor Winch Completely Electric
- Spill Barge w/ Longer Reach for Bank line Placement
- New Anchor Barge
- Trash Incinerator

Challenges

- Subchapter M Compliance
- Build a Bench for USCG Required Credentials Onboard the Goetz Fleet
- Staying Current with New Dredging Technology
- Maintaining a Favorable Daily Plant Rate







Maintenance & Repair Section



Year In Review

- Mechanically Dredged 61,447 Cu Yds in MVP
- USCG Benover Slough and Island 49 light removal
- Red Wing Commercial Harbor Shaping
- LD 3 River wall Stop Logs (Valve Pit)
- LD 2 Tainter Gate Repair/ Miter Gate Install
- LD 6 Monolith Anchors
- Fountain City 1 Stabilization
- TPP Sturgeon Lake Habitat Improvement
- LD 4 Dewatering

Future Plans

- New Towing Vessel - (Replacement of M/v Fountain City) (Outcome of Subchapter M)
- PRIP Items
 - Two Material Barges 120'L x 30"W
 - One Crane Barge 150'L x 50'W w/ 150 Ton Crawler Crane
 - Mechanical Dredge Barge with Excavator
 - Add 10' of beam to the Crane Barge Leonard
- Projects
 - Repower Lyon (Tier compliant)
 - MVP Towing Vessels Sub Chapter M Compliant
 - 30 Ton Hydraulic/Telescopic Crane



LD 2 Miter Gate Replacement



TPP Sturgeon Lake Habitat Improvement



Benover Slough Light Removal



Fountain City 1 Stabilization



LD 3 River Wall Stop Logs



Lock and Dam 4 Dewatering





QUESTIONS



BUILDING STRONG[®]
and Taking Care of People!